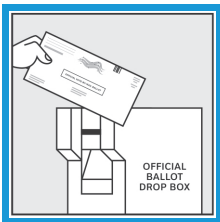


More Ways, More Days to Vote!



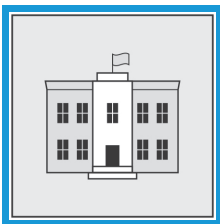
VOTE-BY-MAIL

Postage paid return envelope.



BALLOT DROPBOX

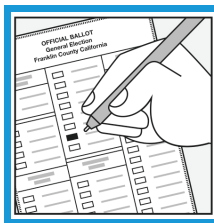
You can drop off your ballot at any secure Ballot Dropbox as soon as you receive and complete it.



VOTE CENTER

You can vote in person by visiting any Vote Center in your county. All Vote Centers will be open for at least 3 days before election day, from Saturday, November 5. Some Vote Centers will be open 10 days before Election Day, from Saturday, October 29. At every Vote Center you can:

- Vote in person
- Register to vote the same day, all the way through Election Day
- Drop off your completed ballot
- Vote with an accessible voting machine
- Get help and voting materials in multiple languages



REMOTE ACCESS VOTE BY MAIL (RAVBM) BALLOT

RAVBM allows voters with disabilities to use their own assistive technology devices in their privacy of their own home to mark a ballot. Voters with disabilities will receive an RAVBM postcard with their voter packet or can call the Election Division 1-888-494-8356 to request your RAVBM link.

VOTE EARLY! VOTE BY NOVEMBER 8, 2022!

For more information visit: <https://www.countyofnapa.org/Elections>

Vote Privately and Independently

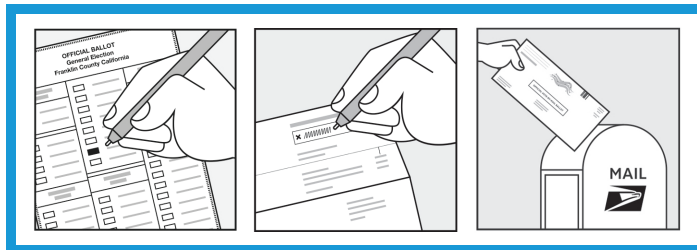
Remote Accessible Vote-by-Mail (RAVBM)

RAVBM allows voters with disabilities to use their own assistive technology devices in their privacy of their own home to mark a ballot.

Simple as **1, 2, 3:**

- 1** Look for the RAVBM postcard in your voter packet or call the Election Division 1-888-494-8356 to request your RAVBM link
- 2** You will receive a link through your email to download your ballot to your device
- 3** Vote, print and return your RAVBM ballot using the provided ballot return envelope along with your signature!

Use the Return Envelope sent to you by the Registrar's office, don't forget to sign your ballot. Mail it in and be counted!



VOTE EARLY! VOTE BY NOVEMBER 8, 2022!

For more information about Accessible Voting options call 1-888-494-8356
or visit <https://www.countyofnapa.org/elections>